

Algorithm

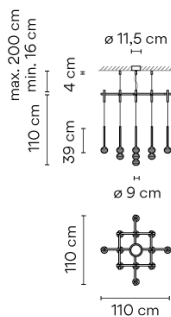
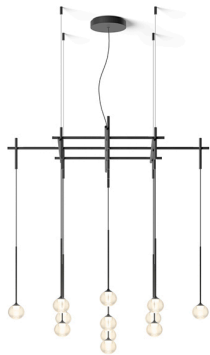
VIBIA

0862



Design By Toan Nguyen

Pendant light fitting designed by Toan Nguyen. Composed of a collection of hand blown glass spheres with LED light source suspended at different heights, anchored to the ceiling via a floating tubular structure. The finishes are matt graphite and matt white.

Model Sheet



Optional: Extra cable length
Min. quantity, upcharge and extra lead time apply [EN]

Finish	 93 White RAL 9016
	 18 Graphite ADAPTA RF 9913 WX
LED temperature color	2700 K / 3500 K
Dimming	Push; 1-10V; DALI-2 / Casambi
Installation type	Built-in

Materials
Sphere: Blown glass
Glass fastening: Aluminum
Diffuser: PC- Polycarbonate
Pendant structure: Steel

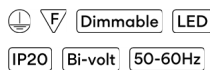
Light source
13 x LED 3,15W 1050mA



LED
CRI>90 4059 lm 99
2700 K / 3500 K

Driver
Constant Current 1050
100~240 V V 50~60 Hz HZ

Remarks
The steel cables that go from the structure to the ceiling are the only ones that allow the height of the lamp to be adjusted. The installation manual describes how to do this and how to cut the cables.



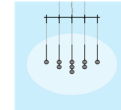
Application
Hanging lamps

Packaging
2 Box
1,089 m x 1,089 m x 0,18 m
Gross weight 17,35
Net weight 11,85
Vol. 0,3344

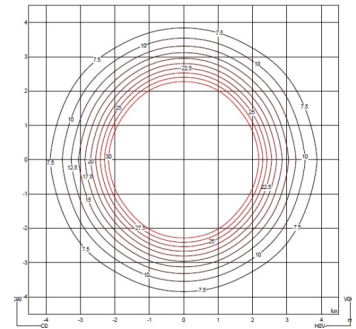
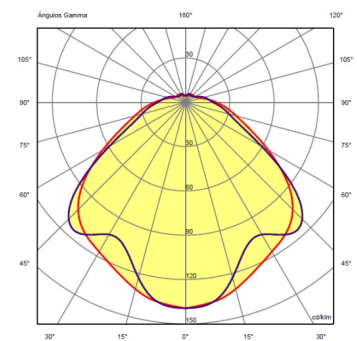
Lighting effect

General lighting

Lamp for general lighting that equally distributes the light in all directions.

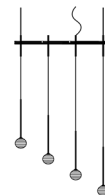


Photometric Data



Efficiency 49.28%
Coordinate System CG
Total Flux 4059.64 lm
Maximum Value 139.40 cd/klm

Other Applications



All of our products come with a five-year warranty. Check our legal terms at www.vibia.com/warranty

Vibia Lighting, S.L.U.

Office / Oficina
Progrés 4-6. 08850 Gavà. Barcelona, Spain.

International T +34 934 796 971
Spain / Portugal T +34 934 796 970

customer.service@vibia.com
vibia.com