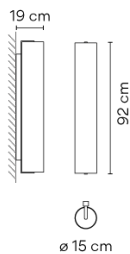


6444

Design By Sebastian Herkner

The glass shade wall light features an open metal frame imbedded with LEDs that contains a cylindrical diffuser made of mouthblown opaline glass. The black frame is affixed to the wall, generating a warm, 360-degree glow as if from a fire. Install in a vertical position.

Model Sheet



Finish	11 Black NCS S 8500-N
LED temperature color	2200 K / 2700 K / 3000 K / 3500 K Optional 2200 K / 2700 K / 3000 K / 3500 K Min. quantity, upcharge and extra lead time apply [EN]
Dimming	Casambi / Push / 1-10V / DALI
Installation type	Surface Canopy

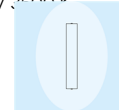
Materials	Body: Aluminum Shade: opal triplex glass Driver box: Aluminum
Light source	1 x LED STRIP 20,8W 750mA
LED	CRI>90 2165 lm 104 2200 K / 2700 K / 3000 K / 3500 K
Driver	Constant Current 750 90~305 V V 50~60 Hz HZ

Application	Wall Lamps
Packaging	1 Box 1.132 m x 0.3 m x 0.3 m Gross weight 8 Net weight 6.5 Vol. 0.1018

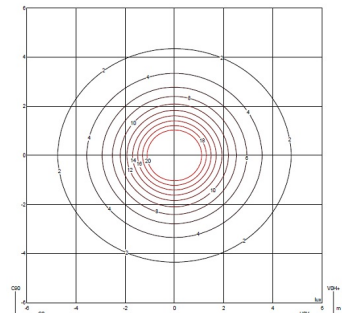
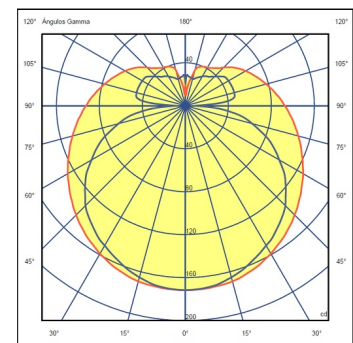
Lighting effect

General lighting

Lamp for general lighting that equally distributes the light in all directions.

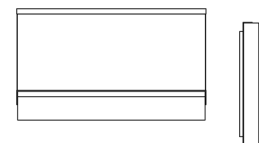


Photometric Data



Efficiency	41.95 lm/W
Coordinate System	CG
Total Flux	1034.74 lm
Maximum Value	171.64 cd

Other Applications



All of our products come with a five-year warranty. Check our legal terms at www.vibia.com/warranty

Vibia Lighting, S.L.U.

Office / Oficina
Progrés 4-6. 08850 Gavà. Barcelona, Spain.

International T +34 934 796 971
Spain / Portugal T +34 934 796 970

customer.service@vibia.com
vibia.com