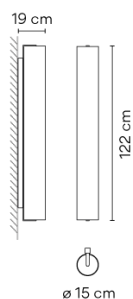


6446

Design By Sebastian Herkner

The glass shade wall light features an open metal frame imbedded with LEDs that contains a cylindrical diffuser made of mouthblown opaline glass. The black frame is affixed to the wall, generating a warm, 360-degree glow as if from a fire. Install in a vertical position.

Model Sheet



Finish	11 Black NCS S 8500-N
LED temperature color	2200 K / 2700 K / 3000 K / 3500 K Optional 2200 K / 2700 K / 3000 K / 3500 K Min. quantity, upcharge and extra lead time apply [EN]
Dimming	Push / Casambi / 1-10V / DALI

Installation type Surface Canopy

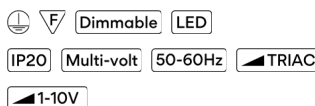
Materials Body: Aluminum
Shade: Blown-glass
Driver box: Aluminum

Light source 1 x LED STRIP 27,9W 750mA



LED CRI>90 2907 lm 104
2200 K / 2700 K / 3000 K /
3500 K

Driver Constant Current 750 90~305
V V 50~60 Hz HZ



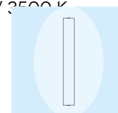
Application Wall Lamps

Packaging 1 Box
1.43 m x 0.3 m x 0.3 m
Gross weight 11.5
Net weight 7.5
Vol. 0.1287

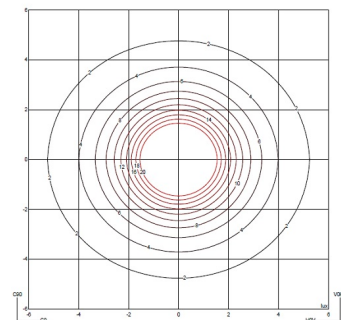
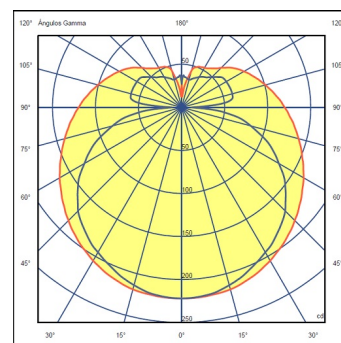
Lighting effect

General lighting

Lamp for general lighting that equally distributes the light in all directions.

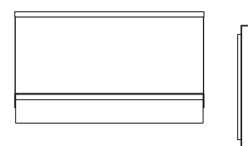


Photometric Data



Efficiency 41.96 lm/W
Coordinate System CG
Total Flux 1338.37 lm
Maximum Value 222.01 cd

Other Applications



All of our products come with a five-year warranty. Check our legal terms at www.vibia.com/warranty

Vibia Lighting, S.L.U.

Office / Oficina
Progrés 4-6. 08850 Gavà. Barcelona, Spain.

International T +34 934 796 971
Spain / Portugal T +34 934 796 970

customer.service@vibia.com
vibia.com