

# Halo lineal

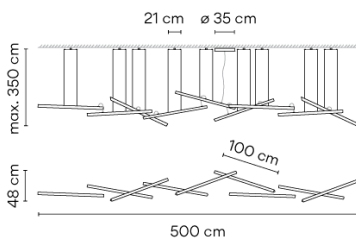
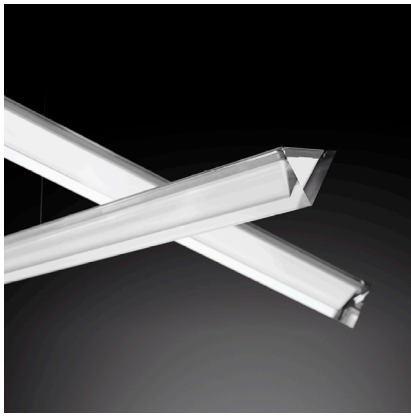
VIBIA

2343

Design By Martín Azúa

HALO is a hanging lamp with nine intertwined, straight pieces, which creates subtle, magical lighting. Designed by Martín Azúa. By combining different pieces you can show off hanging lights which float in the air to fit harmoniously into the room. It is available in matt white lacquer.

## Model Sheet



**Optional: Extra cable length**  
Min. quantity, upcharge and extra lead time apply [EN]

**Finish**  O3 White  
RAL 9016

**LED temperature color** 2700 K / 3000 K

**Dimming** 1-10V / DALI / Casambi

**Installation type** Surface Canopy

**Materials** Diffuser: PMMA  
Ceiling rose: Steel

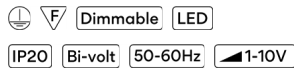
**Light source** 9 x LED STRIP 24V 15.3W



**LED** CRI>80 11552 lm 83.89  
2700 K / 3000 K

**Driver** Constant Voltage 100~240 V V  
50~60 Hz HZ

**Remarks** 1-10V Electronic dimming



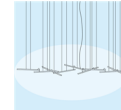
**Application** Hanging lamps

**Packaging** 2 Box  
1.15 m x 0.23 m x 0.21 m  
Gross weight 16.2  
Net weight 14.75  
Vol. 0.0706

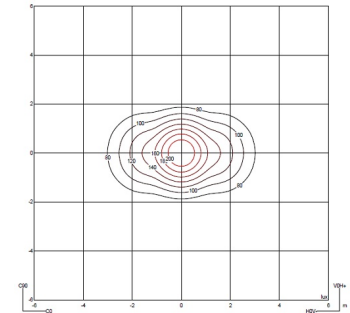
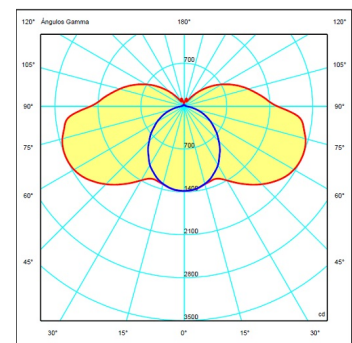
### Lighting effect

#### General lighting

Lamp for general lighting that equally distributes the light in all directions.

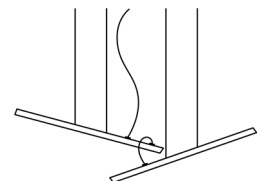


### Photometric Data



**Efficiency** 60.85 lm/W  
**Coordinate System** CG  
**Total Flux** 10416.06 lm  
**Maximum Value** 2097.62 cd

### Other Applications



All of our products come with a five-year warranty. Check our legal terms at [www.vibia.com/warranty](http://www.vibia.com/warranty)

Vibia Lighting, S.L.U.

Office / Oficina  
Progrés 4-6. 08850 Gavà. Barcelona, Spain.

International T +34 934 796 971  
Spain / Portugal T +34 934 796 970

customer.service@vibia.com  
vibia.com