

# Flat

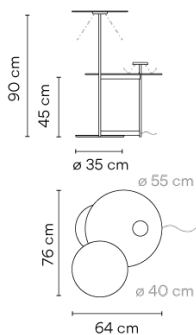
VIBIA

5945

Design By Ichiro Iwasaki

The Flat floor lamp offers multiple functionality; material and light are integrated in a single body. The Flat collection contains various planes of light that rise up to become self-illuminating supports.

## Model Sheet



**Finish**

- 47 Green L1  
NCS S 4005-G80Y
- 13 Off-White  
NCS S 1000-N

**LED temperature color** 2700 K / 3500 K

**Dimming** Push

**Installation type** Plug-in

**Materials**

- Body: Steel
- Base: Steel
- Head: Aluminium
- Reflector: Aluminum

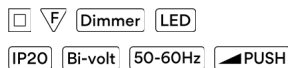
**Light source** 2 x LED PLATE 7W 400mA



**LED** CRI>90 2400 lm 171.4  
2700 K / 3500 K

**Driver** Constant Current 400  
100-240 V V 50-60 Hz HZ

**Remarks** 24V transformer at plug



**Application** Floor Lamps

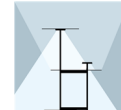
**Packaging**

- 1 Box
- 0.72 m x 0.72 m x 0.96 m
- Gross weight 21.5
- Net weight 15.25
- Vol. 0.4976

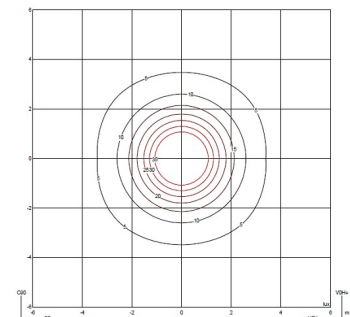
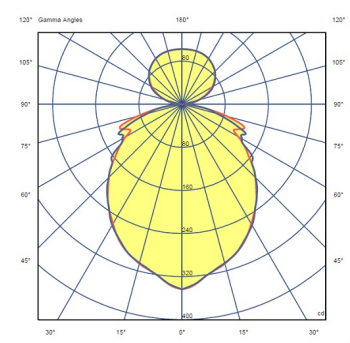
### Lighting effect

#### Indirect lighting

Lamp that emits an upward or backward beam that is reflected by the ceiling or wall.

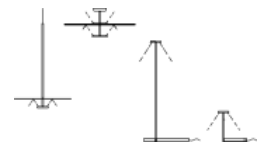


### Photometric Data



**Efficiency** 64.98 lm/W  
**Coordinate System** CG  
**Total Flux** 1280.18 lm  
**Maximum Value** 343.56 cd

### Other Applications



All of our products come with a five-year warranty. Check our legal terms at [www.vibia.com/warranty](http://www.vibia.com/warranty)

Vibia Lighting, S.L.U.

Office / Oficina  
Progrés 4-6. 08850 Gavà. Barcelona, Spain.

International T +34 934 796 971  
Spain / Portugal T +34 934 796 970

customer.service@vibia.com  
vibia.com