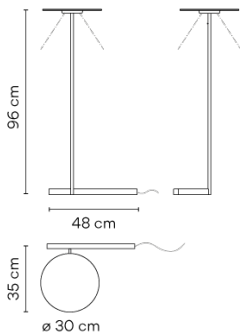


5957

Design By Ichiro Iwasaki

The Flat floor lamp offers multiple functionality; material and light are integrated in a single body. The Flat collection contains various planes of light that rise up to become self-illuminating supports.

Model Sheet



- Finish**
- 47 Green L1
NCS S 4005-G80Y
 - 13 Off-White
NCS S 1000-N
 - 37 Terra Red
NCS S 4040-Y70R

LED temperature color 2700 K / 3500 K

Dimming Push

Installation type Plug-in

Materials
 Body: Steel
 Base: Steel
 Head: Aluminium
 Reflector: Aluminum

Light source 1 x LED PLATE 7W 400mA



LED CRI>90 1200 lm 171.4
2700 K / 3500 K

Driver Constant Current 400
100~240 V V 50~60 Hz HZ

Remarks 24V transformer at plug



Application Floor Lamps

Packaging
 1 Box
 0.37 m x 0.51 m x 1.12 m
 Gross weight 6
 Net weight 4.46
 Vol. 0.2113

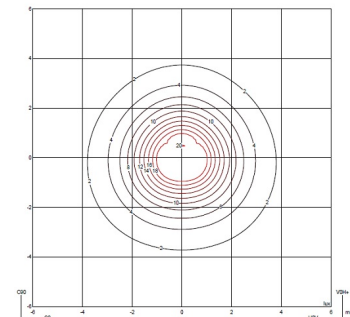
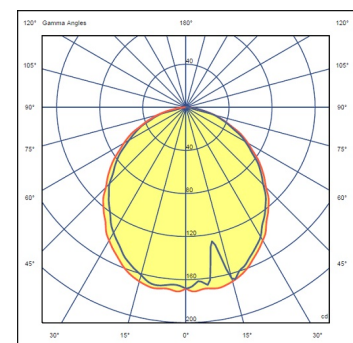
Lighting effect

Indirect lighting

Lamp that emits an upward or backward beam that is reflected by the ceiling or wall.

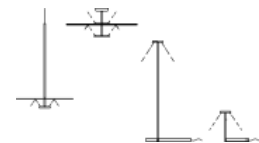


Photometric Data



Efficiency 58.00 lm/W
Coordinate System CG
Total Flux 444.45 lm
Maximum Value 171.27 cd

Other Applications



All of our products come with a five-year warranty. Check our legal terms at www.vibia.com/warranty

Vibia Lighting, S.L.U.

Office / Oficina
 Progrés 4-6. 08850 Gavà. Barcelona, Spain.

International T +34 934 796 971
 Spain / Portugal T +34 934 796 970

customer.service@vibia.com
 vibia.com