

# Flat

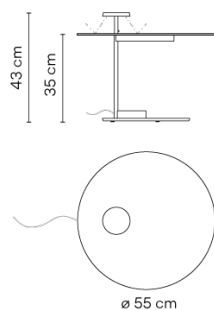
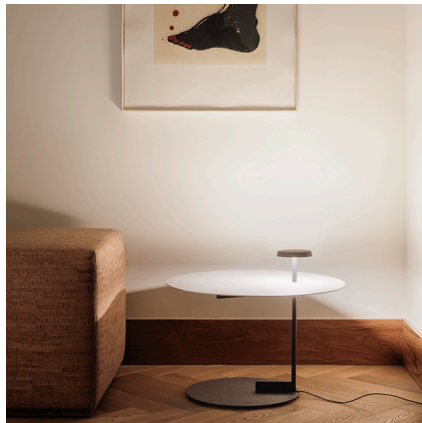
VIBIA

5950

Design By Ichiro Iwasaki

The Flat floor lamp offers multiple functionality; material and light are integrated in a single body. The Flat collection contains various planes of light that rise up to become self-illuminating supports.

## Model Sheet



<b>Finish</b>	10 White NCS S 0300-N
<b>LED temperature color</b>	2700 K / 3500 K
<b>Dimming</b>	Push
<b>Installation type</b>	Plug-in

<b>Materials</b>	Body: Steel Base: Steel Head: Aluminium Reflector: Aluminum
------------------	--

**Light source** 1 x LED PLATE 7W 400mA



**LED** CRI>90 1200 lm 171.4  
2700 K / 3500 K

**Driver** Constant Current 400  
100~240 V V 50~60 Hz HZ

**Remarks** 24V transformer at plug



**Application** Floor Lamps

**Packaging** 1 Box  
0.72 m x 0.72 m x 0.5 m  
Gross weight 14.6  
Net weight 12.71  
Vol. 0.2592

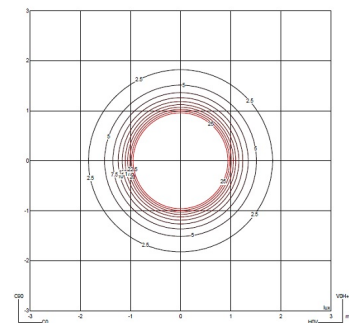
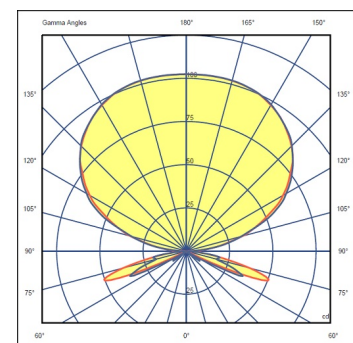
### Lighting effect

#### Indirect lighting

Lamp that emits an upward or backward beam that is reflected by the ceiling or wall.

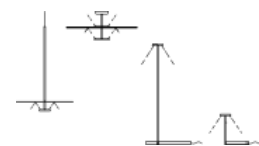


### Photometric Data



<b>Efficiency</b>	51.15 lm/W
<b>Coordinate System</b>	CG
<b>Total Flux</b>	455.40 lm
<b>Maximum Value</b>	102.48 cd

### Other Applications



All of our products come with a five-year warranty. Check our legal terms at [www.vibia.com/warranty](http://www.vibia.com/warranty)

Vibia Lighting, S.L.U.

Office / Oficina  
Progrés 4-6. 08850 Gavà. Barcelona, Spain.

International T +34 934 796 971  
Spain / Portugal T +34 934 796 970

customer.service@vibia.com  
vibia.com