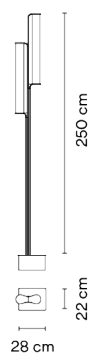


2815

Design By Sebastian Herkner

Class is an outdoor pillar lantern in which matter and light come together in a single body. The matt black of the lamp's stem contrasts with the fluted surface of the glass cylinders. The light bathes a wide area of outdoor space thanks to its double asymmetry.

Model Sheet

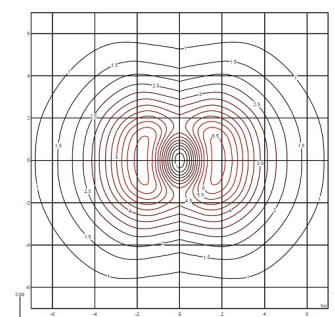
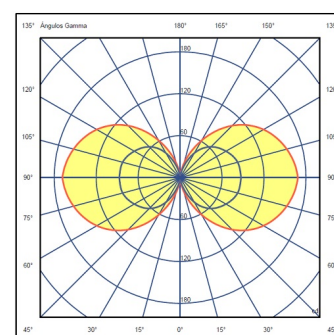


Finish	● 11 Black NCS S 8500-N
LED temperature color	2700 K
Dimming	Casambi / DALI / Push
Installation type	Built-in / Remote basic
<hr/>	
Materials	Body: Aluminum Shade: Borosilicate
Light source	2 x LED STRIP 7W 300mA E
LED	CRI>90 1980 lm 141 2700 K
Driver	Constant Current 600 220~240 V V 50~60 Hz HZ
	<input type="checkbox"/> Dimmable <input checked="" type="checkbox"/> LED <input checked="" type="checkbox"/> IP65
	<input checked="" type="checkbox"/> 50-60Hz <input checked="" type="checkbox"/> PUSH
Application	Outdoor lamps
Packaging	2 Box 2.92 m x 0.32 m x 0.315 m Gross weight 56.8 Net weight 50.8 Vol. 0.3425

Lighting effect



Photometric Data



Efficiency	94.86 lm/W
Coordinate System	CG
Total Flux	1328.07 lm
Maximum Value	169.66 cd

Other Applications



All of our products come with a five-year warranty. Check our legal terms at www.vibia.com/warranty

Vibia Lighting, S.L.U.

Office / Oficina
Progrés 4-6. 08850 Gavà. Barcelona, Spain.

International T +34 934 796 971
Spain / Portugal T +34 934 796 970

customer.service@vibia.com
vibia.com