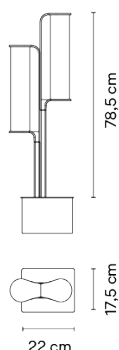


2805

Design By Sebastian Herkner

Class is a double outdoor beacon lamp in which matter and light come together in a single body. The rigid stem rises elegant, while the light passes softly through its cylinders, asymmetrically placed.

Model Sheet



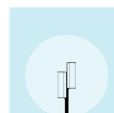
| | |
|------------------------------|--------------------------|
| Finish | 11 Black NCS S 8500-N |
| LED temperature color | 2700 K |
| Dimming | Push / Casambi / DALI |
| Installation type | Built-in / Remote basic |

| | |
|---------------------|---|
| Materials | Body: Aluminum Shade: Borosilicate |
| Light source | 2 x LED STRIP 3,5W 150mA E |
| LED | CRI>90 990 lm 141 2700 K |
| Driver | Constant Current 300 220~240 V V 50~60 Hz HZ |

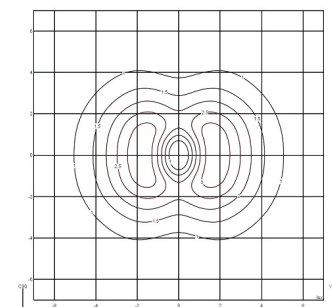
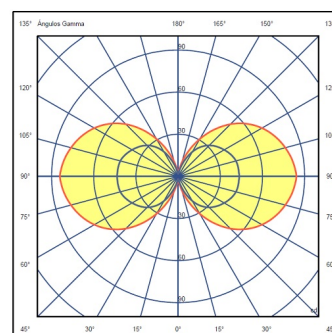
Dimmable LED IP65
 50-60Hz PUSH

| | |
|--------------------|--|
| Application | Outdoor lamps |
| Packaging | 2 Box 1.18 m x 0.35 m x 0.37 m Gross weight 29.6 Net weight 25.6 Vol. 0.1846 |

Lighting effect



Photometric Data



| | |
|--------------------------|------------|
| Efficiency | 94.86 lm/W |
| Coordinate System | CG |
| Total Flux | 664.03 lm |
| Maximum Value | 85.44 cd |

Other Applications



All of our products come with a five-year warranty. Check our legal terms at www.vibia.com/warranty

Vibia Lighting, S.L.U.

Office / Oficina
Progrés 4-6. 08850 Gavà. Barcelona, Spain.

International T +34 934 796 971
Spain / Portugal T +34 934 796 970

customer.service@vibia.com
vibia.com