

# Break plus

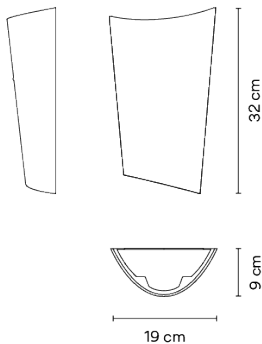
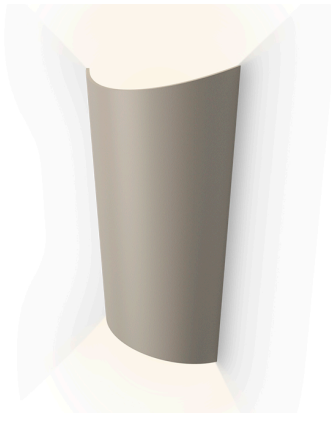
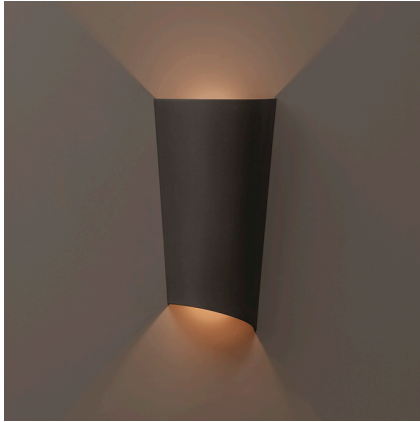
VIBIA

4118

Design By Xuclà

Break Plus outdoor wall lamp. It resembles a tile or a brick, designed to be integrated in the architecture of all types of space, creating a sense of spatial depth. Its light is reflected in two directions.

## Model Sheet



<b>Finish</b>	22 Graphite Black NCS S 8000-N
	37 Terra Red NCS S 4040-Y70R
	25 Beige D1 NCS S 4005-Y50R
	95 Primer RAL 9016

**LED temperature color** 2700 K / 3500 K

**Dimming** DALI / Casambi

**Installation type** Remote basic

**Materials** Body: Aluminum  
Diffuser: PC- Polycarbonate

**Light source** 2 x LED 4W 350mA



**LED** CRI>90 707.52 lm 181  
2700 K / 3500 K

**Driver** Constant Current 350 100-240  
V V 50-60 Hz HZ



**Application** Outdoor lamps

**Packaging** 1 Box  
0.42 m x 0.27 m x 0.11 m  
Gross weight 2.71  
Net weight 1.71  
Vol. 0.0124

### Lighting effect

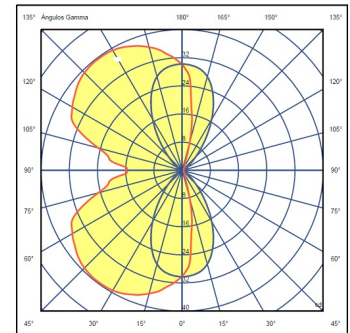
#### Ground lighting

Reduced-height outdoor lamp to shade light on the ground.



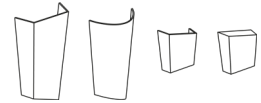
### Photometric Data

Go to [vibia.com](http://vibia.com) to get the photometric data for the different LED color temperatures.



<b>Efficiency</b>	15.31 lm/W
<b>Coordinate System</b>	CG
<b>Total Flux</b>	153.79 lm
<b>Maximum Value</b>	39.63 cd

### Other Applications



All of our products come with a five-year warranty. Check our legal terms at [www.vibia.com/warranty](http://www.vibia.com/warranty)

Vibia Lighting, S.L.U.

Office / Oficina  
Progrés 4-6. 08850 Gavà. Barcelona, Spain.

International T +34 934 796 971  
Spain / Portugal T +34 934 796 970

customer.service@vibia.com  
vibia.com