

Algorithm

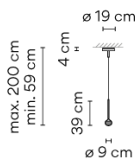
0820

Design By Toan Nguyen



Pendant light fitting designed by Toan Nguyen. Composed of a hand blown glass sphere with a LED light source and suspended in the air via a tensile cable. Available in lacquered matt graphite and matt white.

VIBIA

Model Sheet



Optional: Extra cable length
Min. quantity, upcharge and extra lead time apply [EN]

Finish	 93 White RAL 9016
	 18 Graphite ADAPTA RF 9913 WX
LED temperature color	2700 K / 3500 K
Dimming	Casambi / Push; 1-10V; DALI-2
Installation type	Surface Canopy / Surface Free Wire / Remote Micro / Built-in XS

Materials
Sphere: Blown glass
Glass fastening: Aluminum
Diffuser: PC- Polycarbonate
Pendant structure: Steel

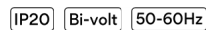
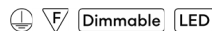
Light source
1 x LED 3,15W 1050mA



LED
CRI>90 312.28 lm 99.13
2700 K / 3500 K

Driver
Constant Current 1050
100~240 V V 50~60 Hz HZ

Remarks
Request built-in canopy at
www.vibia.com
Ra: 80



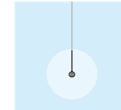
Application
Hanging lamps

Packaging
1 Box
0.427 m x 0.293 m x 0.105 m
Gross weight 2.2
Net weight 1.7
Vol. 0.0131

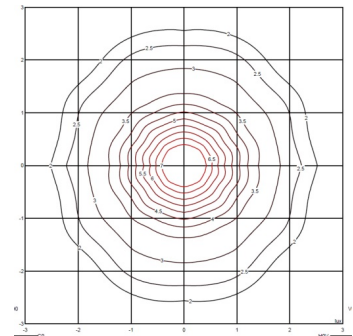
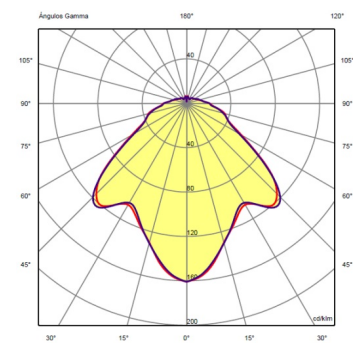
Lighting effect

General lighting

Lamp for general lighting that equally distributes the light in all directions.

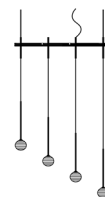


Photometric Data



Efficiency	49.59%
Coordinate System	CG
Total Flux	312.28 lm
Maximum Value	160.78 cd/klm

Other Applications



All of our products come with a five-year warranty. Check our legal terms at www.vibia.com/warranty

Vibia Lighting, S.L.U.

Office / Oficina
Progrés 4-6. 08850 Gavà. Barcelona, Spain.

International T +34 934 796 971
Spain / Portugal T +34 934 796 970

customer.service@vibia.com
vibia.com