

# Wrap S

design Balutto Associati, 2016

Wrap chair with four legs base in white or graphite lacquered steel. Shell upholstered in leather, ecoleather, fabric or custom's fabric.



## Finishing and Materials

### Structure



White Steel



Grafite Steel

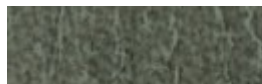
### Coating



Inca Ecoleather  
17 colors



Magic Ecoleather  
17 colors



Vintage Ecoleather  
4 colors



Fiore Leather  
15 colors



Vintage Leather  
4 colors



Pix Fabric  
13 colors



Mirage Fabric  
16 colors



Natural Wool Fabric  
15 colors



Long Life Fabric  
13 colors



Bubble fabric  
14 colors



Hot Fabric  
13 colors

## Dimensions



Dimension	cm	inch
A	80	31.5

Dimension	cm	inch
B	51	20.1
C	56	22.1
D	46	18.1

---

## Volumetric Details

**Weight** 14.8

**Volume** 0.41 mc

**Package** 1

---

## Gallery



---

## Downloads

[3D Wrap S \(zip\)](http://www.midj.com/images/uploads/resources/WRAP_S.zip) - [http://www.midj.com/images/uploads/resources/WRAP\\_S.zip](http://www.midj.com/images/uploads/resources/WRAP_S.zip)

---

## Materials Certifications

### Inca Ecoleather

Martindale: 50.000 cycles Composition: 6% Cotton, 6% Polyester, 88% PVC Shrinking about: 1% Fire retardant fabric: Classe 1IM, BS 5852 Part. 1, IMO RES. A.652(16)

### Magic Ecoleather

Martindale: 150.000 cycles Composition: 31% Cotton, 48% Polyurethane, 21% Polyester Shrinking about: 1% Fire retardant ecoleather: Classe 1IM, BS 5852 Part. 1, Cigaret Test, Match Test

### Vintage Ecoleather

Ecoleather phtalatic free - R.E.A.C.H. 1907/2006/EU Breathable ecoleather Composition: 90% PVC, 7% Polyurethane, 3% Cotton Shrinking about 1%

### Fiore Leather

BS 5852 parte 1; ISO 5402>50000 cicli; ISO 105B02 ? 5; ISO 3377-1 ?20 N; ISO 11644 ? 2.5 N/Cm; EN 1021/1-2; EN ISO 17233 -20°; IMO RES A 6528(16)

<b>Vintage Leather</b>	UNI EN ISO 105 B02 ?3; ISO 5402>50000 cicli; ISO 3377-1?20; UNI EN ISO 11640 Secco - Dry 50 c ?4 Umido - Wet 20 c ? 3; Sudore - Sweat 20 c ? 3
<b>Mirage Fabric</b>	Martindale: 100.000 cycles Composition: 100% Polyester Shrinking about 1% Fire retardant fabric: classe 1IM, B1 DIN 4102, M1, B1 OENORM Part.1, BS 5852 Crib 5, EN 1021, USA Calif. Bull 117, IMO 688 (17) - IMO 563 (14) - IMO 653 (16)
<b>Natural Wool Fabric</b>	Martindale: 100.000 cycles Composition: 70% Wool, 25% Polyamid, 5% Fibers Shrinking about: 1% Fire retardant fabric: BS 5852 part. 1, Cigaret test, Match test
<b>Long Life Fabric</b>	Martindale 40.000 cycles Composition: 74% Polyester, 18% Cotton, 8% Acrylic Shrinking about 1%
<b>Bubble fabric</b>	Martindale: 35.000 cycles Composition: 100% Pes Fire retardant fabric: BS5852:2006 (p. 11 CRIB 5), EN1021-1, EN1021-2, UNI 9175:2010 - classe 1 im
<b>Hot Fabric</b>	Martindale: 45.000 cycles Composition: 100% Pes Fire retardant fabric: BS5852:2006 (p. 11 CRIB 5), EN1021-1, EN1021-2, UNI 9175:2010 - classe 1 im