



# Wrap H65 / H75

design Balutto Associati, 2016

Wrap stool with four legs base in white or graphite lacquered steel. Shell upholstered in leather, ecoleather, fabric or custom's fabric.

The stool is available in two different heights: 65 cm (25.6 in) or 75 cm (29.5 in).



## Finishing and Materials

### Structure



White Steel



Grafite Steel

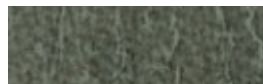
### Coating



**Inca Ecoleather**  
17 colors



**Magic Ecoleather**  
17 colors



**Vintage Ecoleather**  
4 colors



**Special Leather**  
8 colors



**Fiore Leather**  
15 colors



**Vintage Leather**  
4 colors



**Pix Fabric**  
13 colors



**Mirage Fabric**  
16 colors



**Natural Wool Fabric**  
15 colors



**Long Life Fabric**  
13 colors

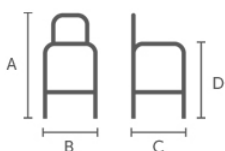


**Bubble fabric**  
14 colors



**Hot Fabric**  
13 colors

## Dimensions



Dimension	cm	inch
A	94	37

Dimension	cm	inch
B	51	20.1
C	54	21.3
D	65	25.6

## Volumetric Details

**Weight** 10

**Volume** 0.29 mc

**Package** 1

## Materials Certifications

<b>Inca Ecoleather</b>	Martindale: 50.000 cycles Composition: 6% Cotton, 6% Polyester, 88% PVC Shrinking about: 1% Fire retardant fabric: Classe 1IM, BS 5852 Part. 1, IMO RES. A.652(16)
<b>Magic Ecoleather</b>	Martindale: 150.000 cycles Composition: 31% Cotton, 48% Polyurethane, 21% Polyester Shrinking about: 1% Fire retardant ecoleather: Classe 1IM, BS 5852 Part. 1, Cigaret Test, Match Test
<b>Vintage Ecoleather</b>	Ecoleather phtalatic free - R.E.A.C.H. 1907/2006/EU Breathable ecoleather Composition: 90% PVC, 7% Polyurethane, 3% Cotton Shrinking about 1%
<b>Fiore Leather</b>	BS 5852 parte 1; ISO 5402>50000 cicli; ISO 105B02 ? 5; ISO 3377-1 ?20 N; ISO 11644 ? 2.5 N/Cm; EN 1021/1-2; EN ISO 17233 -20°; IMO RES A 6528(16)
<b>Vintage Leather</b>	UNI EN ISO 105 B02 ?3; ISO 5402>50000 cicli; ISO 3377-1?20; UNI EN ISO 11640 Secco - Dry 50 c ?4 Umido - Wet 20 c ? 3; Sudore - Sweat 20 c ? 3
<b>Mirage Fabric</b>	Mantindale: 100.000 cycles Composition: 100% Polyester Shrinking about 1% Fire retardant fabric: classe 1IM, B1 DIN 4102, M1, B1 OENORM Part.1, BS 5852 Crib 5, EN 1021, USA Calif. Bull 117, IMO 688 (17) - IMO 563 (14) - IMO 653 (16)
<b>Natural Wool Fabric</b>	Martindale: 100.000 cycles Composition: 70% Wool, 25% Polyamid, 5% Fibers Shrinking about: 1% Fire retardant fabric: BS 5852 part. 1, Cigaret test, Match test
<b>Long Life Fabric</b>	Martindale 40.000 cycles Composition: 74% Polyester, 18% Cotton, 8% Acrylic Shrinking about 1%
<b>Bubble fabric</b>	Martindale: 35.000 cycles Composition: 100% Pes Fire retardant fabric: BS5852:2006 (p. 11 CRIB 5), EN1021-1, EN1021-2, UNI 9175:2010 - classe 1 im
<b>Hot Fabric</b>	Martindale: 45.000 cycles Composition: 100% Pes Fire retardant fabric: BS5852:2006 (p. 11 CRIB 5), EN1021-1, EN1021-2, UNI 9175:2010 - classe 1 im