

MAD JOKER

MARCEL WANDERS (2016)



DESCRIPTION

The Mad collection is completed by the addition of a new 'character': an armchair with a tall, enveloping backrest, which conveys a comfortable, reassuring sensation. A much smaller size than the usual ear typology, this chair wonderfully fits multiple spaces of various dimensions, while still being very comfortable, enveloping the user and providing privacy. Mad Joker foresees two structural solutions: one with wooden feet and the other with a spinning base in die-cast aluminium.

Poliform

MAD JOKER

MARCEL WANDERS (2016)



TECHNICAL DESCRIPTION

TYOLOGY

armchair

STRUCTURE

flexible moulded polyurethane

PRE-COVER

polyester padding

COVER

stretched, removable cover in fabric - leather

LEGS

solid wood - painted metal swivel base

Poliform

MAD JOKER

MARCEL WANDERS (2016)

MAPL800J



800
31 1/2"

415
16 1/4"

1085
42 3/4"



800
31 1/2"



MAPN800J



800
31 1/2"

415
16 1/4"

1085
42 3/4"

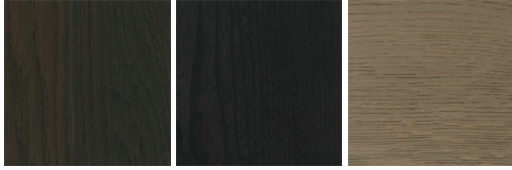


800
31 1/2"



MAD JOKER

FINISHINGS\LEGS\WOODS (3)



SPESSART
OAK

BLACK ELM

CENERO OAK

MAD JOKER

FINISHINGS\SWIVEL BASE\ BROWN NICKEL MAT PAINTED (1)



BROWN
NICKEL MAT
PAINTED

MAD JOKER

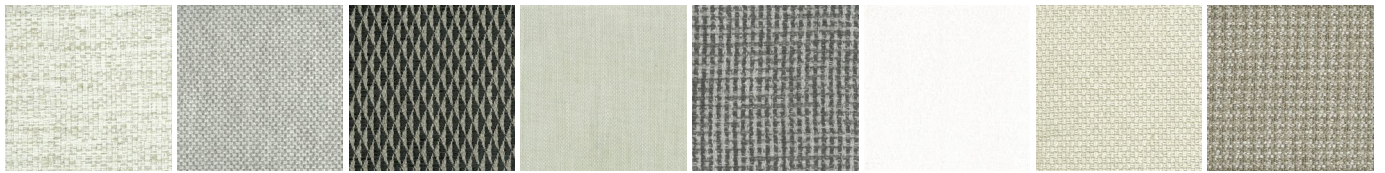
FINISHINGS\SWIVEL BASE\GLOSSY PAINTEDBROWN NICKEL (1)



GLOSSY
PAINTEDBRO
WN NICKEL

MAD JOKER

FINISHINGS\COVER\FABRIC (35)



CHIOS

ARGO

CORINTO

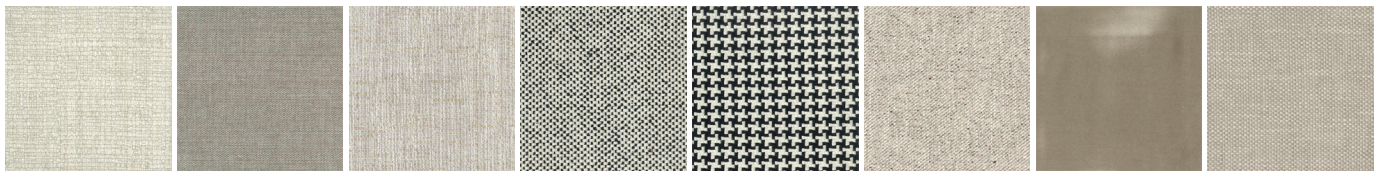
ITACA

MILOS

OLIMPIA

PAROS

ZANTE



SPARTA

SALFORD

ORLEANS

DERBY

LIMOGES

OXFORD

PERSIA

RABAT



MERIDA

HANNOVER

CORDOBA

CALEDONIA

NORWAY

ASPEN

ATLANTA

BERLINO



KYOTO

LIMA

MELBOURNE

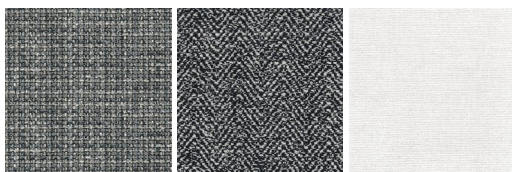
PORTO

REIMS

SAVANA

SIVIGLIA

INDRA - NEW



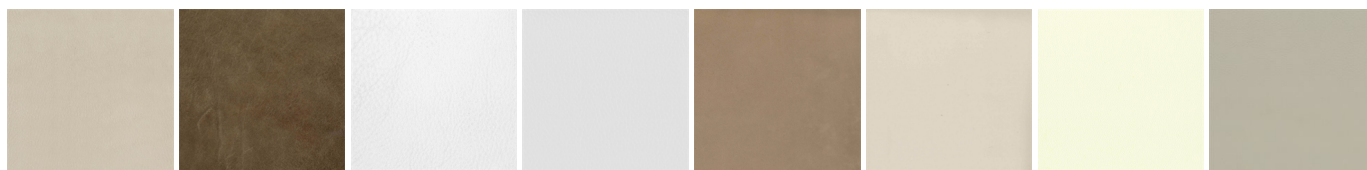
LIPSI - NEW

SKYROS -
NEW

NAXOS - NEW

MAD JOKER

FINISHINGS\COVER\LEATHER (8)



NABUK
LEATHER

VINTAGE
LEATHER

SUPER
LEATHER

PELLE
SPECIAL

AGED-
LOOKING
LEATHER

COLORS
LEATHER

SPRING
LEATHER

SOFT
LEATHER